

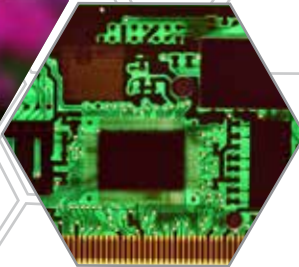
HB-50000-M Monochrome  
HB-50000-C Color

**\*\*\*PRELIMINARY\*\*\***



# 25GIGE BOLT

**High Speed 25GigE SFP28 Interface**  
**2.5x the Speed of 10GigE**  
Cable lengths from 1M to 10KM  
No Fiber Converters Needed  
No Frame Grabbers  
GigE Vision Compliant



**GiGE**  
VISION  
GEN<i>CAM

## 25GIGE CAMERAS

Speed is Everything.

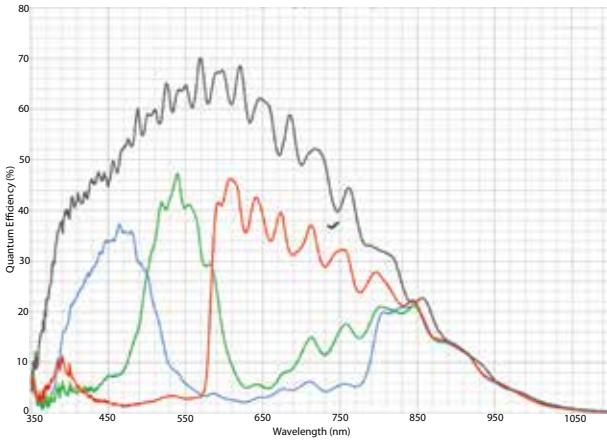
**\*\*\*PRELIMINARY\*\*\***

# **HB 50000 50MP**

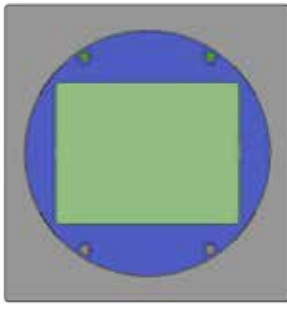
**HB-50000-M MONOCHROME / HB-50000-C COLOR**



**QE & Spectral Response**  
**QE \* FF - @550 nm with micro lens**



**Front View Dimensions**



58mm

**Side View Dimensions**



97mm

60mm

Please refer to 3d Mechanicals available for download on our website for exact measurements

<b>Sensor</b>	Cmosis CMV50000
<b>Resolution</b>	7920x6004
<b>Megapixels</b>	50MP
<b>Sensor Type</b>	35mm CMOS
<b>Max Frame Rate</b>	30fps
<b>Cell Size</b>	4.6µm square
<b>Standard Mount</b>	52mm, M52x1.5x12mm BFL, F-mount Available
<b>Shutter</b>	Global
<b>Bit Depth</b>	8 or 12 Bit
<b>GPIO / Triggering</b>	3 in, 3 out Software, External (Pulse or Edge)
<b>Interface</b>	SFP28 - 25 GigE
<b>Exposure/Integration</b>	100µs-1s
<b>Dynamic Range</b>	64 dB
<b>Monochrome Modes</b>	Mono8, Mono12
<b>Color Modes</b>	RGB8, YUV411, YUV422, YUV444, BGR8
<b>Raw Modes</b>	BayerRG8, BayerRG12
<b>Operating System</b>	Windows 7/8 10, Linux (64bit)
<b>Compliance</b>	CE, FCC, RoHS, WEEE, GigE Vision, GenICam
<b>Power Requirements</b>	9W, 12V
<b>Operating Temperature</b>	0C-45C
<b>Storage Temperature</b>	-30C to +60C
<b>Dimensions &amp; Weight</b>	97x58x60 - 350g
<b>Warranty</b>	2 Years

**EMERGENT VISION TECHNOLOGIES**

7-11720 Stewart Crescent  
 Maple Ridge, B.C. V2X 9E7 Canada  
 Ph: 1-866-780-6082  
 E-Mail: sales@emergentvisiontec.com  
 emergentvisiontec.com



**\*Preliminary data. Subject to change.**

**\*all minimum exposure specs can vary from what is listed based on the limitations of each sensor as per notice from the manufacturer.**